



Beaufort County Public Works
Stormwater Infrastructure
Project Summary

Project Summary: Gum Tree Lane Channel

Activity: Routine/Preventive Maintenance

Duration: 03/13/18-03/14/18

Narrative Description of Project:

Installed (1) access pipe and rip rap for erosion control.

2018-585 / Gum Tree Lane Channel	Labor Hours	Labor Cost	Equipment Cost	Material Cost	Contractor Cost	Indirect Labor	Total Cost
APINS / Access pipe - installed	38.0	\$821.08	\$286.30	\$622.49	\$0.00	\$402.84	\$2,132.71
AUDIT / Audit Project	0.5	\$10.90	\$0.00	\$0.00	\$0.00	\$0.00	\$10.90
HAUL / Hauling	29.0	\$618.41	\$223.86	\$991.31	\$0.00	\$275.70	\$2,109.28
2018-585 / Gum Tree Lane Channel Sub Total	67.5	\$1,450.39	\$510.16	\$1,613.80	\$0.00	\$678.54	\$4,252.89
Grand Total	67.5	\$1,450.39	\$510.16	\$1,613.80	\$0.00	\$678.54	\$4,252.89

Before

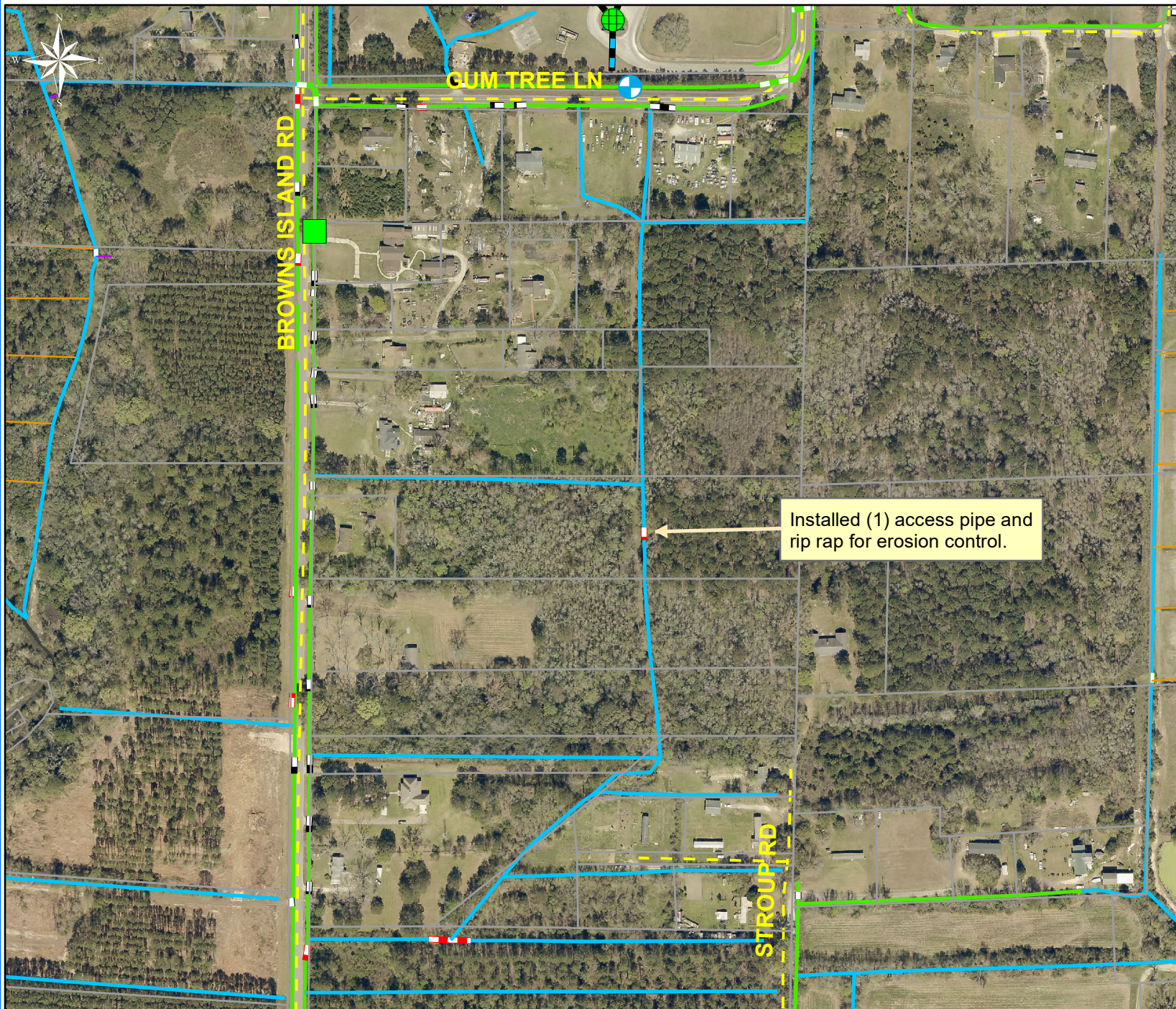


During



After





Project: Gum Tree Lane Channel

Activity: Routine/ Preventive Maintenance

Project #: 2018-585

Township/SW Dist: Sheldon/5

Completed: March 2018

Legend	
Drainage Type	
	Access Pipe
	Bleeder Pipe
	Channel Pipe
	Channel
	Stream
	Crossline Pipe
	Driveway Pipe
	Lateral
	Lateral Pipe
	River
	Road Pipe
	Roadside
	Roadside Pipe



1 inch = 330 feet